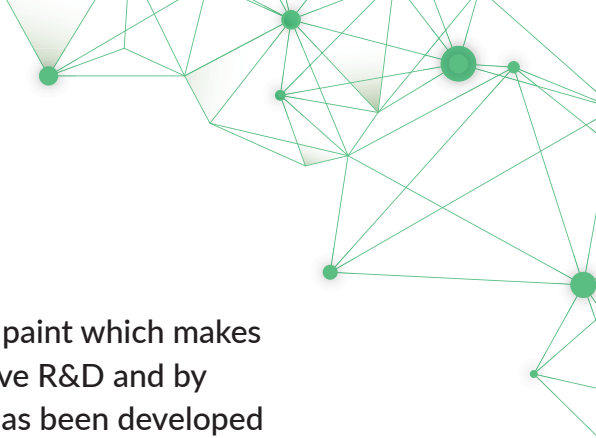




NIPPON PAINT

ATOM 2-IN-1

MULTI-PURPOSE EMULSION FOR INTERIOR AND EXTERIOR



Nippon Atom 2-in-1 Multi-purpose Emulsion is flat and durable paint which makes it ideal for both interior and exterior surfaces. Following extensive R&D and by listening to our decorating partners' inputs, this dynamic paint has been developed for maximum performance which is based on acrylic modified emulsion.

GREEN ASSURED



PRODUCT FEATURES



Smooth Matt finish

Uniform smooth appearance



Washable

Trouble free cleaning of the walls



Low VOC

Healthy interiors – ensures that home owners can occupy the house immediately after painting



2-in-1 Emulsion



3 year warranty*



NOW WITH ANTI-FADE TECHNOLOGY



*T&C apply. Refer to the warranty terms and conditions.

Where To use: Can be used for both Interior and Exterior surfaces.



NIPPON PAINT

ATOM 2-IN-1

MULTI-PURPOSE EMULSION FOR INTERIOR AND EXTERIOR

TECHNICAL DETAILS

Bases	:	White & Bases
Colour Range	:	Please refer to Nippon Paint shade card and fan decks
Finish	:	Matt
Dry Time	:	To Touch: 30 minutes To Recoat: 4-6 Hours
Gloss level	:	60° Head: less than 5
Clean up solvent	:	Clean, potable water
Stability of diluted paint	:	24 Hours
Shelf life	:	3 Years from the date of manufacture in original tightly closed containers
Dilution	:	50% by volume with clean, potable water for both Interior as well as exterior Application. Stir well before use. 20-30% by volume with potable water for dark shades

Coverage:



ATOM 2-IN-1

Coverage:

Interior: 16.72-19.51 sq.mt./litre/coat & 9.29-10.22 sq.mt./litre/2 coats
Exterior: 8.36-9.29 sq.mt./litre/coat & 4.18-4.65 sq.mt./litre/2 coats

(Actual coverage is dependant on the substrate condition, Film Thickness, surface porosity, method of application)

HOW TO APPLY

Surface Preparation:

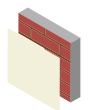
Interior Surface: Keep surface clean and dry. Remove dust, dirt, grease and loose flaking paint from the surface and rub with sandpaper to smooth. Ensure there is no fungus or moisture on the walls.

Exterior Surface: For Repainting: Clean the surface till it is free from dust, grease and flaking paint from surface. Any unstable paint to be removed, using high pressure wash or scraper whichever is appropriate. Algae and fungus on the wall to be removed, by using high pressure wash or coil brush and shall be treated with Walltron Kleanwall fungicidal solution.

New plaster/Fresh Concrete: Ensure surface is completely cured and dry. Application of cement paint/lime/Cement putty as undercoat is not recommended. Fill the cracks upto 3mm if any with Walltron N-seal crack fill powder.

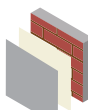
Process:

Recommended painting system: Interior surface



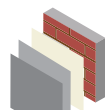
Primer
Nippon Paint Multi-Purpose Wall Sealer/Interior Primer

Apply 1 coats
Allow it to dry for 6-8 hours



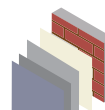
Putty
Nippon Paint Acrylic Wall Putty

Apply 1-2 coats
Allow it to dry for 12-18 hours



Primer
Nippon Paint Multi-Purpose Wall Sealer/Interior Primer

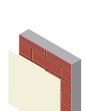
Apply 1 coats
Allow it to dry for 6-8 hours



Top Coat
Nippon Paint Atom 2-in-1 Multi-purpose Emulsion

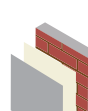
Apply 2-3 coats
Allow it to dry for 4-6 hours

Exterior Surface for Repainting/New Plaster



Primer
Nippon Paint Multi-Purpose Wall Sealer/Exterior Primer

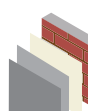
Apply 1 coat
Allow it to dry for 6-8 hours



Top Coat
Nippon Paint Atom 2-in-1 Multi-purpose Emulsion

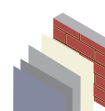
Apply 2-3 coats
Allow it to dry for 4-6 hours

Exterior Surface for New Plaster if Previously coated with lime/white cement



Primer
Nippon Paint Dr.Bond Efflorescence Resistance Sealer

Apply 1 coats with 1: 1 Dilution
Allow it to dry for 6-8 hours



Top Coat
Nippon Paint Atom 2-in-1 Multi-purpose Emulsion

Apply 2-3 coats
Allow it to dry for 4-6 hours

Application:

Brush: Dilute both 1st and 2nd coats with 50% water

Roller: Dilute both 1st and 2nd coats with 30% water

Conventional Spray: Dilute both 1st and 2nd coats with 30% water

Stir well before use & apply by brush, roller or spray. Ensure roller is loaded evenly. Apply liberally and evenly avoid overspreading. If more than one can of colour is to be used in the same area, intermix before use.

SAFETY AND ENVIRONMENT

During Painting:

Always work in a well ventilated area. Wear appropriate attire, especially gloves and eye protection gear. Avoid contact with skin as it may cause irritation.

Cleaning:

Clean all equipments with clean water immediately after use.

Safety Instructions:

In the case of eye contact, rinse immediately with water and seek immediate medical treatment. To remove paint from skin, use soap and water or appropriate cleanser. In the event of spillage, contain and collect spilt paint by using sand or earth.

Precautions:

Avoid painting when the temperature is below 10°C. Painting is not recommended if the moisture content and alkalinity of the walls is high. Moisture content of the walls should be below 16% (measured by Protimeter) and alkalinity of the wall should be below pH-9. Relative humidity should be below 85%. Painting on a newly plastered wall is recommended after 6 weeks of curing.

Note: For dark shades and horizontal surfaces 1 or 2 additional coats may be required for better performance of paint film. Primed surface should be immediately painted with topcoats
Post Application Instruction: To enhance performance of the paint film, clean the exterior surfaces, algae or fungus if any with clean water in an interval of 6 months.

Storage:

Store paint in a cool, dry and well ventilated place away from heat sources, flammables or direct sunlight. Keep container tightly closed in a secure, upright position. Do not store near food, drink or animal feed. Keep out of reach of children. Do not dispose of unwanted paint into drains, water sources or open sewers. To dispose safely, pour unwanted paint onto old newspapers and let dry before placing in a proper waste receptacle.

Disposal Information:

Disposal of any paint waste & containers in accordance with applicable Environment (Protection) Act 1986 under the Hazardous Wastes (Management & Handling) rules 1989.

Environment:

Does not contain any added lead, mercury or chromium compounds.
Lead content does not exceed 90 parts per million.

